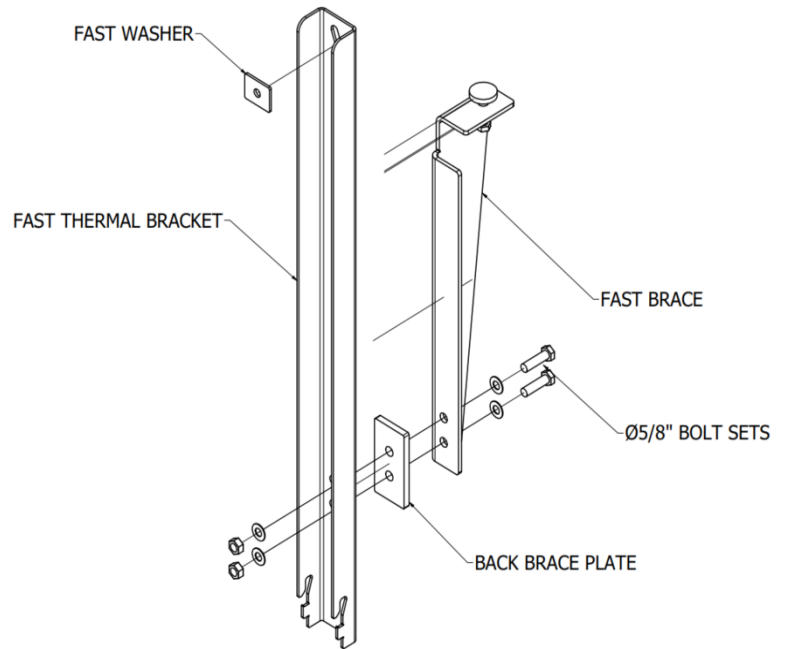




INSTALLATION INSTRUCTIONS FOR

FAST® BACK BRACE ASSEMBLY



The Back Brace Assembly prevents deflection by providing support when the FAST Thermal Bracket™ offset shelf angle support ("FAST Thermal Bracket") exceeds 25" in height.

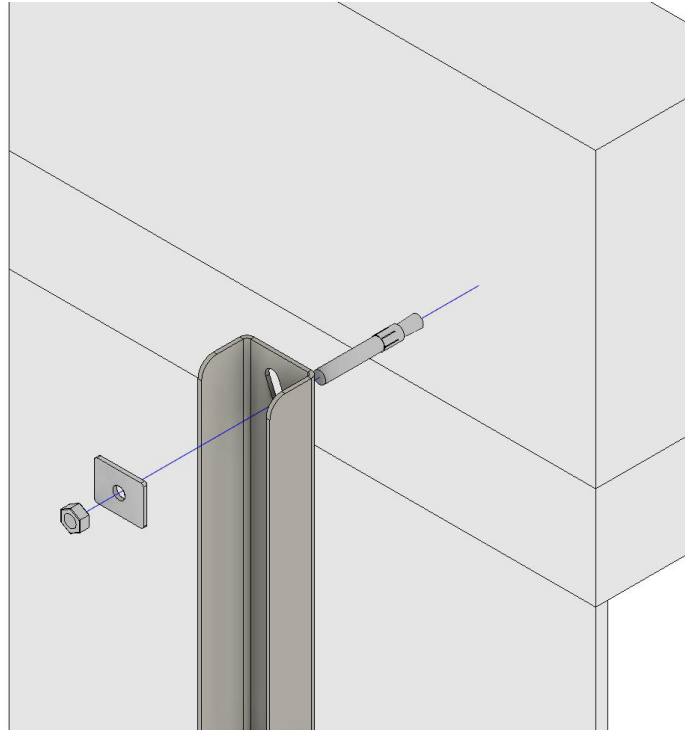
- Adds stability to the bracket
- Can be used to reduce loads on the anchor
- Functions like a kicker but can fit into a 6" stud cavity
- Allows long drop downs from slab to shelf angle without additional structural steel support
- No welding required

Copyright © 2021 FERO Corporation

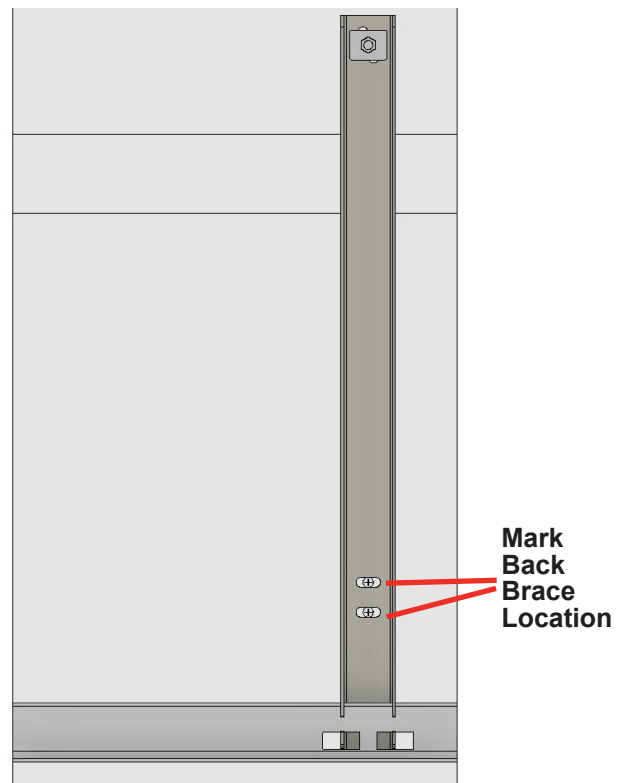
FERO®, FAST®, Thermal Bracket™, FAST-FLEX™ are registered trademarks of FERO Corporation. The FERO FAST Back Brace support and assembly is patented: US 11,162,265. Other US and Foreign Patents Pending. The FERO FAST family of masonry supports, as installed may fall within the scope of one or more US or foreign patents or patent applications. Those patents include US 9,316,004; US 9,447,585; US 10,323,419; US 10,294,676; US 11,041,315; US 11,162,265; and other pending applications. Other US and Foreign Patents Pending.

INSTALLATION INSTRUCTIONS

1. **Preemptively measure all components to the rest of the wall assembly to ensure everything will fit once assembled.** Start by installing the anchorage component to temporarily hold the FAST Thermal Bracket in place.

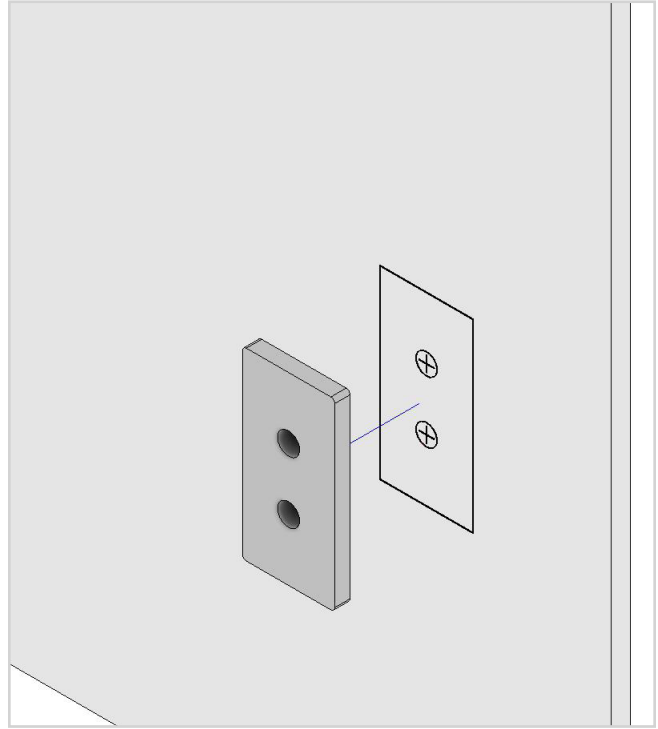


2. **Temporarily install all FAST Thermal Brackets along a line of shelf angle to level the shelf angle.** Mark the location of the Back Brace connection once everything is level.

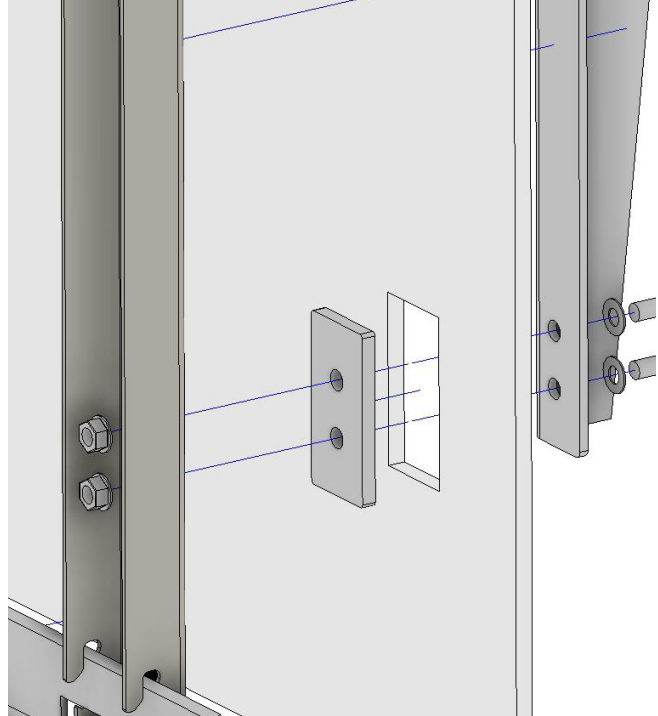


INSTRUCTIONS

3. Use the Back Brace plate to trace an outline for the cut in the sheathing. Cut out the sheathing once properly located.

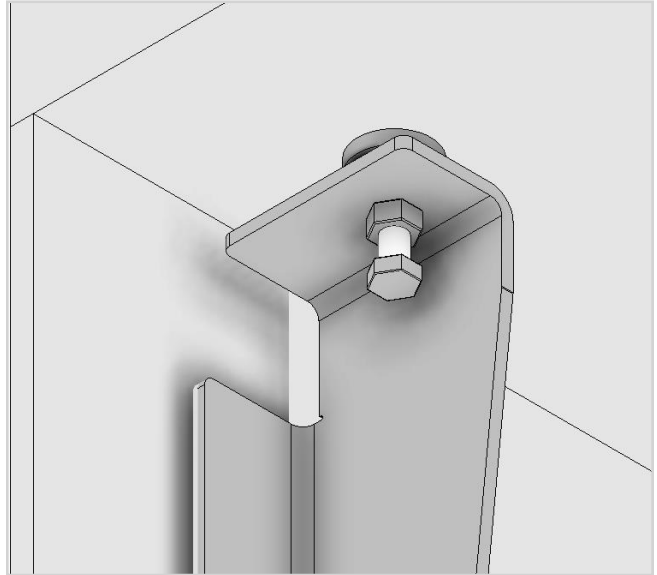


4. Install the Back Brace plate in the cutout of the sheathing and reseal the air vapor membrane on the surface of the back brace plate. Fasten the FAST Thermal Bracket to the Back Brace through the Back Brace plate.

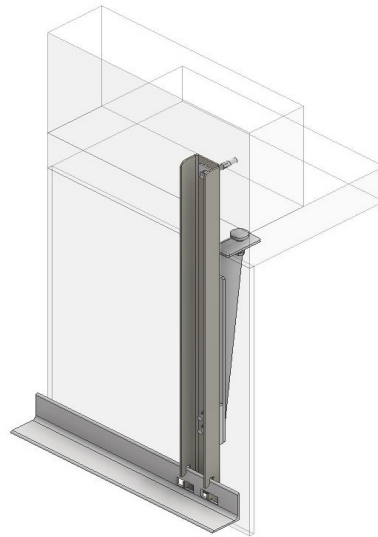


INSTRUCTIONS

5. Torque bolt to snug tight to ensure contact with a rigid surface.



INSTALLATION IS COMPLETE!



Contact us if you have any questions. We are here to help!
☎ Phone: (780) 455-5098 ✉ engineering@ferocorp.com 🌐 www.ferocorp.com