

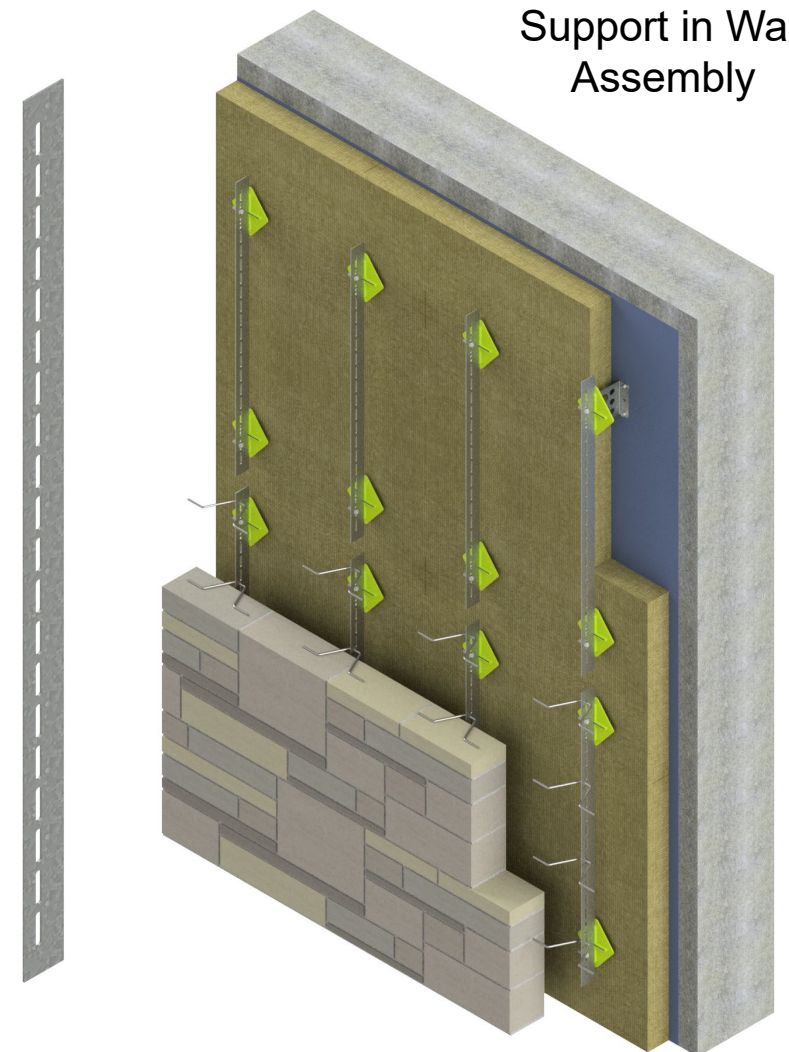
FERO Rubble Stone Support provides easy installation for irregular and random stone patterns. A slotted extension strip is introduced to facilitate FERO V-Tie™ placement anywhere along the vertical axis. The system can be installed before construction of the veneer, which saves time when compared to conventional ties needing to be installed as the stone is placed to fit with the pattern. Any of the Holed variants of FERO Thermal Tie™ Masonry Connectors can be used with the FERO Rubble Stone Support so that it can be used on any backup wall type.



SYSTEM COMPONENTS:

1. 26-3/4" x 1-3/8" Thermal Extension Strip
 - Offers V-Tie Installation at any point along the vertical axis.
 - Note: The Support is mechanically fastened to two or more Plates
2. FERO Thermal Tie™ Masonry Connector – Holed
 - Incorporation of thermal holes through the body of the plate reduces thermal bridging
3. FERO V-Tie™
 - Engages more mortar than any other tie
4. Diamond Insulation Support (optional)
 - Restrains the insulation from separating from the structural backing/air barrier

Example of Rubble Stone Support in Wall Assembly



ORDER FERO RUBBLE STONE SUPPORTS*

of supports required:

FINISH: HDG SS

*Note: FERO Thermal Tie™ Masonry Connectors ordered with separate Submittal Sheet.

Thermal Extension Strip:
Carbon Steel (16 Gauge) ASTM A653/A924 SS230
Stainless Steel (16 Gauge) ASTM 240 Type 304L

V-Tie:
Carbon Steel (ø3/16") ASTM A82
Stainless Steel (ø3/16") ASTM A580 Type 304

Insulation Support:
100% Recycled Polyethylene

Hot-Dip Galvanizing:
Min. 460 g/m²/side
ASTM A123, ASTM A153 Class B

LEED/Recycled Content:
Steel: 87.6% post-consumer content; 6.8% pre-consumer content
Plastics: 100% post-consumer

All FERO products include complete documentation with descriptions, technical illustrations and images. Installation requirements and methods are clearly detailed.

Satisfies requirements of CSA A370, ACI 530.1/ ASCE 6/ TMS 602, IBC, ASTM A123, ASTM A153, Class B.