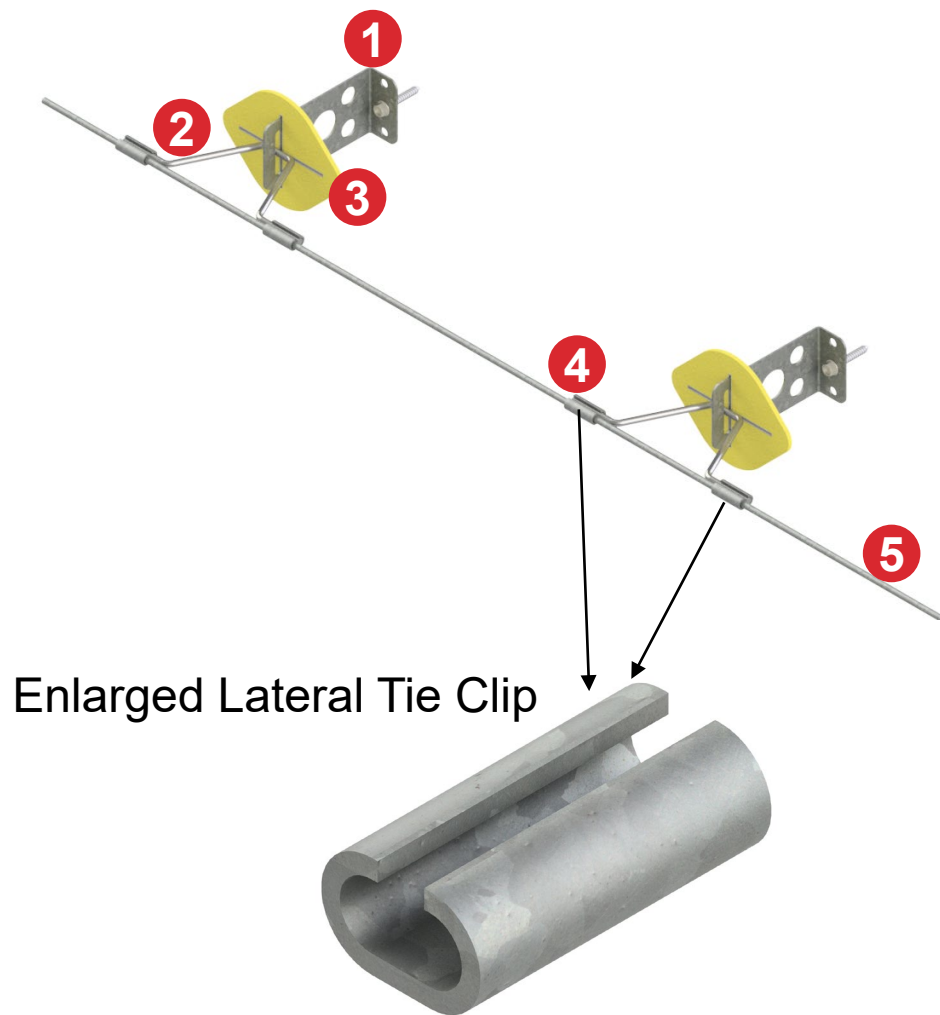


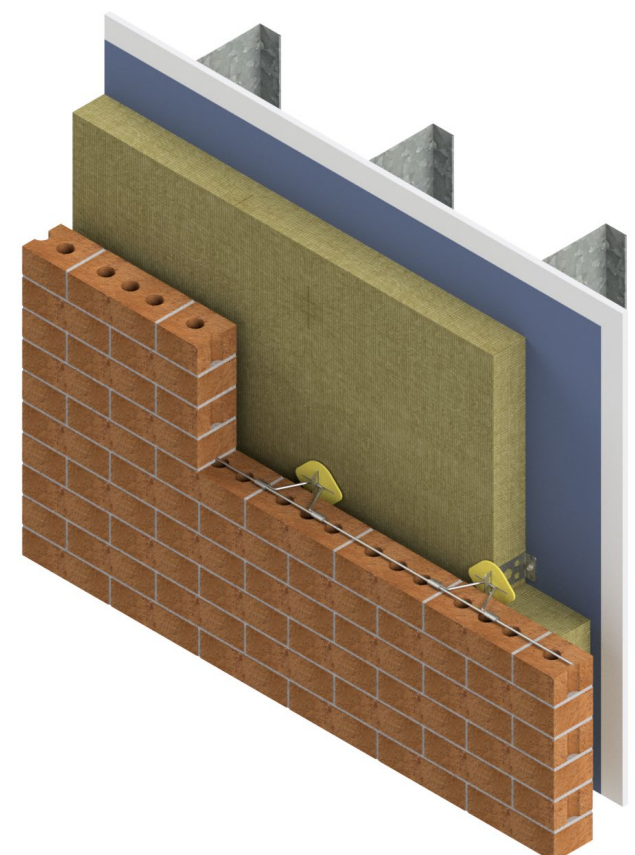
The FERRO® Lateral Tie Clip allows for greater push-through and pullout capacity than other conventional ties and systems. In areas with high-seismic building codes, masonry veneer requires single-wire reinforcement to run through to the masonry ties, our Lateral Tie Clip is a system engineered to work with FERRO Thermal Tie™ Masonry Connectors. Using this system, the single wire and the V-Tie™ are affixed, and this allows for appropriate movement. Any free play between the wires is eliminated once the system is mortared within a bed joint.

FERRO LATERAL TIE CLIP SYSTEM:



1. Thermal L-Plate™ Connector (select FERRO Thermal Tie Masonry Connector separately)
 - Incorporation of thermal holes through the body of the plate reduces thermal bridging
 - Composite action is achieved between the masonry veneer and the structural backing
2. FERRO V-Tie™
 - Engages more mortar than any other tie
3. FERRO Insulation Support
 - Lemon/Diamond/Orange available for tie or connector
 - Restrains the insulation from separating from the structural backing/air barrier
4. FERRO Lateral Tie Clip
 - The slot in the Lateral Tie-Clip is 0.2" (5.0mm) wide to allow the insertion of 3/16" (4.76 mm) diameter continuous wire during installation
5. Continuous Wire
 - Available for purchase through FERRO or can be sourced locally

Example of Wall Assembly



ORDER FERRO LATERAL TIE CLIPS

FINISH:	<input type="checkbox"/> HDG	<input type="checkbox"/> SS
# of clips required:		
Length per continuous wire:	<input type="checkbox"/> in	<input type="checkbox"/> mm
# of continuous wires:		

Lateral Tie Clips:
Carbon Steel (16 Gauge) ASTM A653/A924 SS230
Stainless Steel (16 Gauge) ASTM 240 Type 304L

V-Tie:
Carbon Steel (ø3/16") ASTM A82
Stainless Steel (ø3/16") ASTM A580 Type 304

Continuous Wire:
Carbon Steel (ø3/16") ASTM A82
Stainless Steel (ø3/16") ASTM A580 Type 304

Hot-Dip Galvanizing:
Min. 460 g/m²/side
ASTM A123, ASTM A153 Class B

LEED/Recycled Content:
Steel: 87.6% post-consumer content; 6.8% pre-consumer content
Plastics: 100% post-consumer

All FERRO products include complete documentation with descriptions, technical illustrations and images. Installation requirements and methods are clearly detailed.

Satisfies requirements of CSA A370, ACI 530.1/ ASCE 6/ TMS 602, IBC, ASTM A123, ASTM A153, Class B