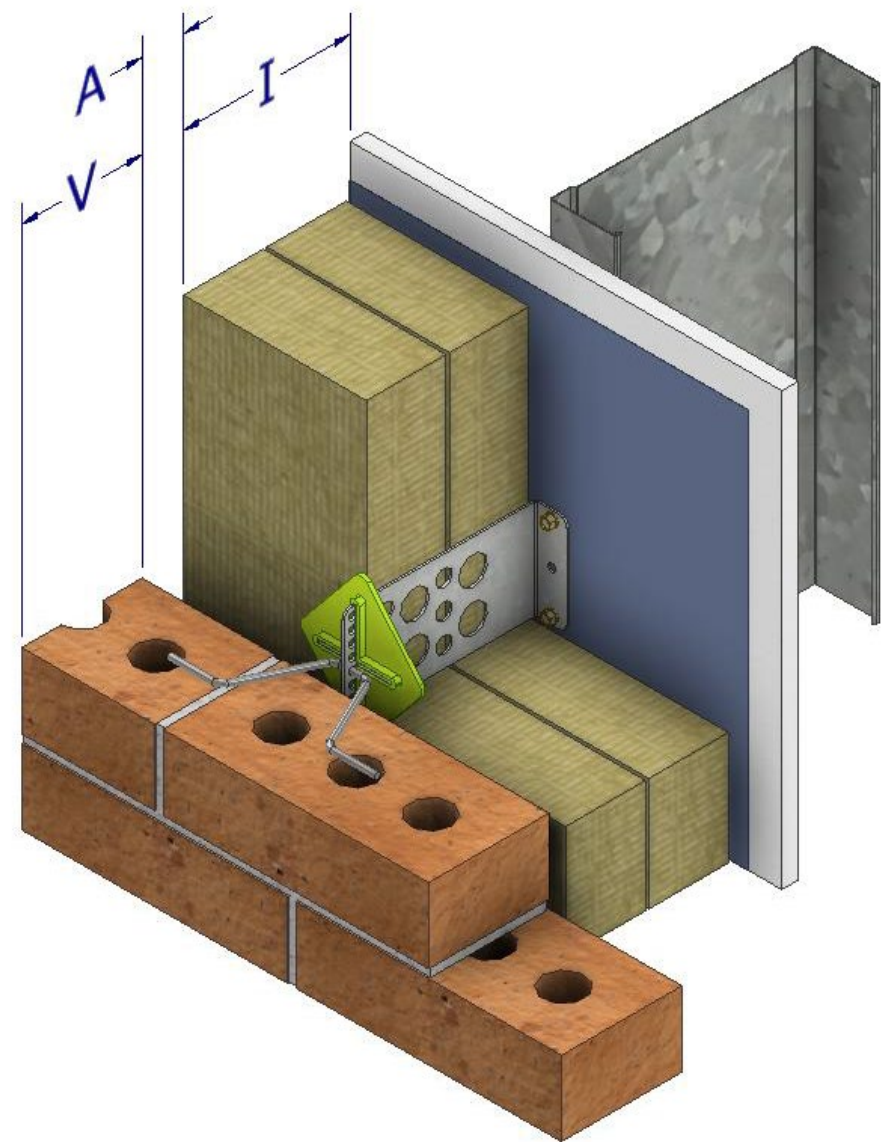
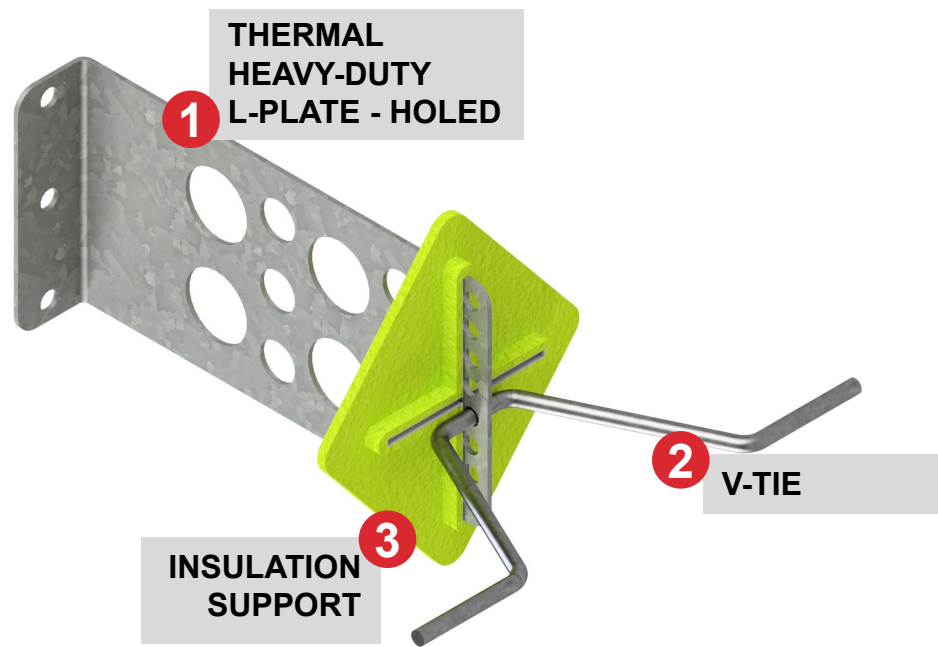


# FERO Thermal Tie™ - Heavy-Duty Holed Rap-Tie® Masonry Connector

For steel stud, wood stud, concrete, or concrete block walls



**SYSTEM COMPONENTS:**

- 1. Thermal Heavy-Duty L-Plate® Connector - Holed**
  - Thermal holes through the body of the plate reduces thermal bridging
  - Composite action is achieved between the masonry veneer and the structural backing
- 2. FERO V-Tie™**
  - Engages more mortar than any other tie
- 3. Diamond Insulation Support (optional)**
  - Restrains the insulation from separating from the structural backing/air barrier

COMPONENT DIMENSIONS			
I	Insulation		<input type="checkbox"/> in <input type="checkbox"/> mm
A	Air Space		
V	Veneer Width		
FINISH:		<input type="checkbox"/> HDG	<input type="checkbox"/> SS
# of ties required:			

The FERO Thermal Tie™ - Heavy-Duty Holed Rap-Tie® Masonry Connector (“Heavy-Duty Holed Rap-Tie”) is our most versatile brick tie that is suitable for almost any application. Being a face-mounted thermal tie, it is quick to install and can be used on steel stud, wood stud, concrete, and concrete block walls. This Heavy-Duty variant of the FERO Thermal Tie™ - Holed Rap-Tie® Masonry Connector is more suitable for larger cavity spaces, but like all FERO ties, it can be designed to accommodate any insulation thickness and air space. For the additional utility of having the masonry veneer function in composite action with the structural backing, use two fasteners with this tie so that it resists shear and axial forces.

Fasteners not included. This tie can be customized for higher loads and larger cavities. Contact FERO for engineering services if required.

<b>Thermal L-Plate:</b> Carbon Steel (16 Gauge) ASTM A1011 CS Type B Stainless Steel (16 Gauge) ASTM 240 Type 304L  <b>V-Tie:</b> Carbon Steel (ø3/16”) ASTM A82 Stainless Steel (ø3/16”) ASTM A580 Type 304  <b>Insulation Support:</b>	100% Recycled Polyethylene  <b>Hot-Dip Galvanizing:</b> Min. 460 g/m <sup>2</sup> /side ASTM A123, ASTM A153 Class B  <b>LEED/Recycled Content:</b> Steel: 87.6% post-consumer content; 6.8% pre-consumer content Plastics: 100% post-consumer	All FERO products include complete documentation with descriptions, technical illustrations and images. Installation requirements and methods are clearly detailed.  FERO Thermal Tie™ Masonry Connectors satisfy requirements of CSA A370/ACI 530.1/ ASCE 6/ TMS 602/IBC.
--	--	---